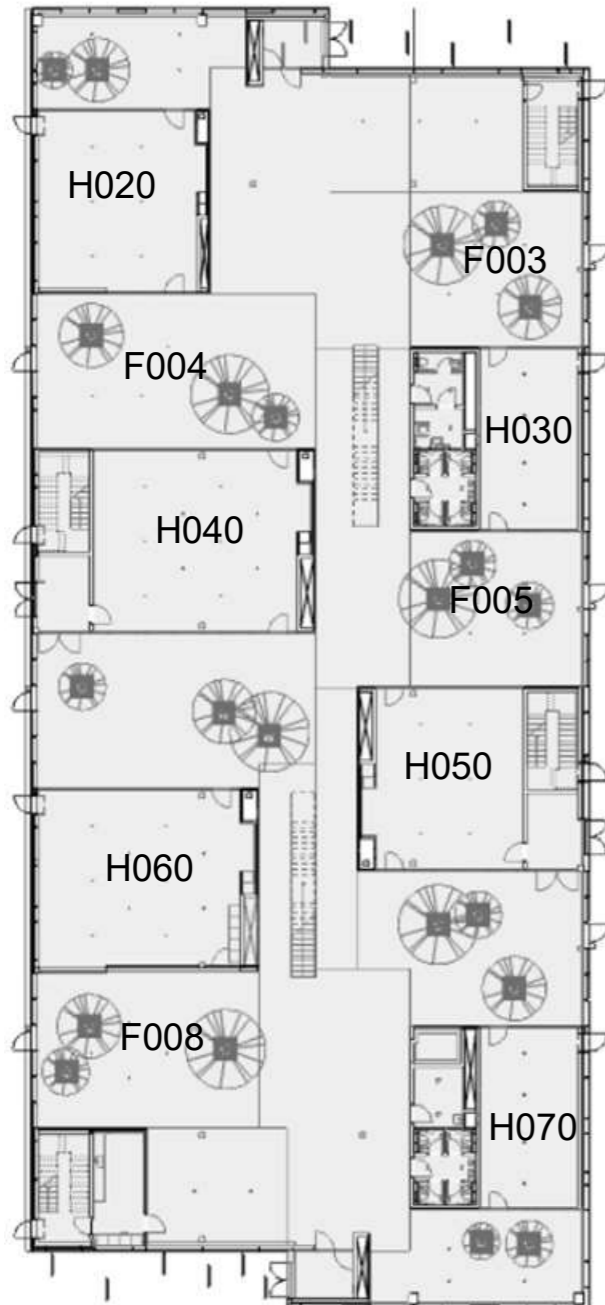


# BYGNING 324

Nr	Pronestor Navn	Lokale Type	Syllabus	Normal Drift	Eksamen	Kommentar
1	Forside					
2	B324-H020	Holdlokale	36	37	15+2	
3	B324-H030	Holdlokale	24	25	10+2	
4	B324-H040	Holdlokale	60	61	24+2	
5	B324-H050	Holdlokale	36	37	15+2	
6	B324-H060	Holdlokale	60	61	24+2	
7	B324-H070	Holdlokale	24	25	10+2	
8	B324-F003-F008	Foyerområde	2x18+2x24	x	Nej	

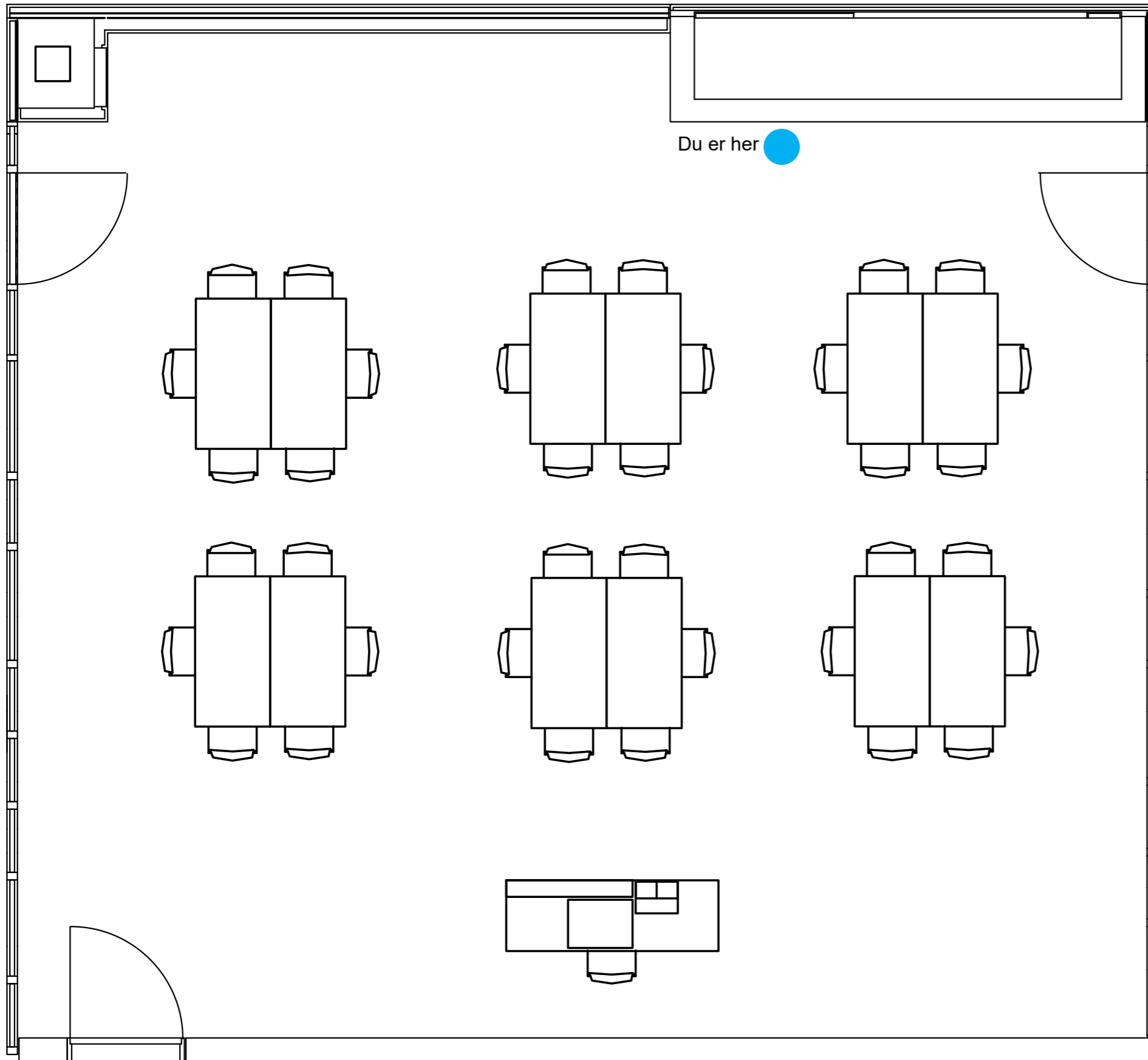
CTRL+Klik for at følge link  
Matematiktorvet





# Inventaropstillingsplan - Normal drift

Richard Petersens Plads, Bygning 324, Lokale 020, 2800 Kgs. Lyngby



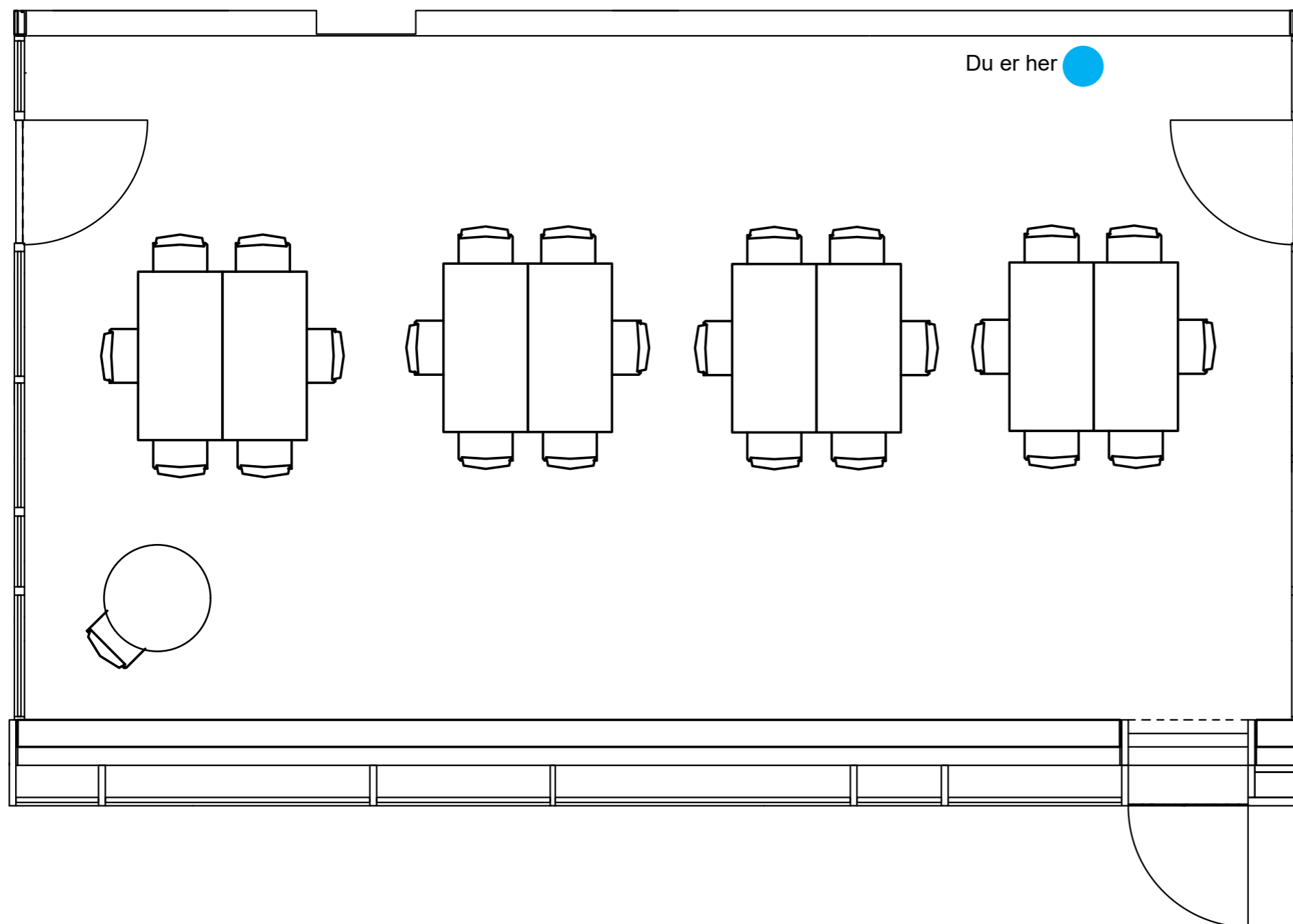
## Inventaropstilling:

- 12 borde (4-Learning 640x1280)
- 37 stole (4-Cast Four)



# Inventaropstillingsplan - Normal drift

Richard Petersens Plads, Bygning 324, Lokale 030, 2800 Kgs. Lyngby



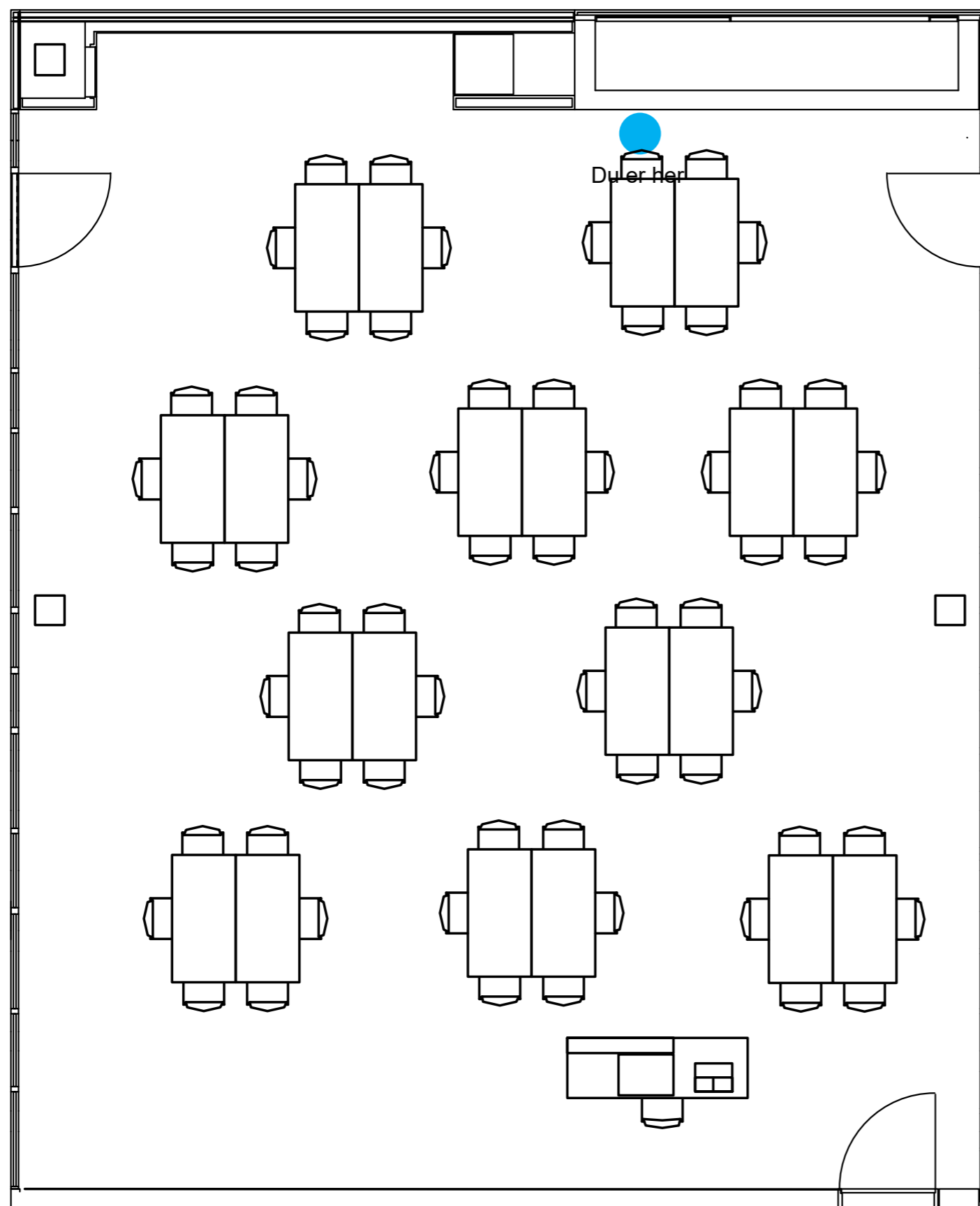
## Inventaropstilling:

- 8 borde (4-Learning 640x1280)
- 25 stole (4-Cast Four)



# Inventaropstillingsplan - Normal drift

Richard Petersens Plads, Bygning 324, Lokale 040, 2800 Kgs. Lyngby



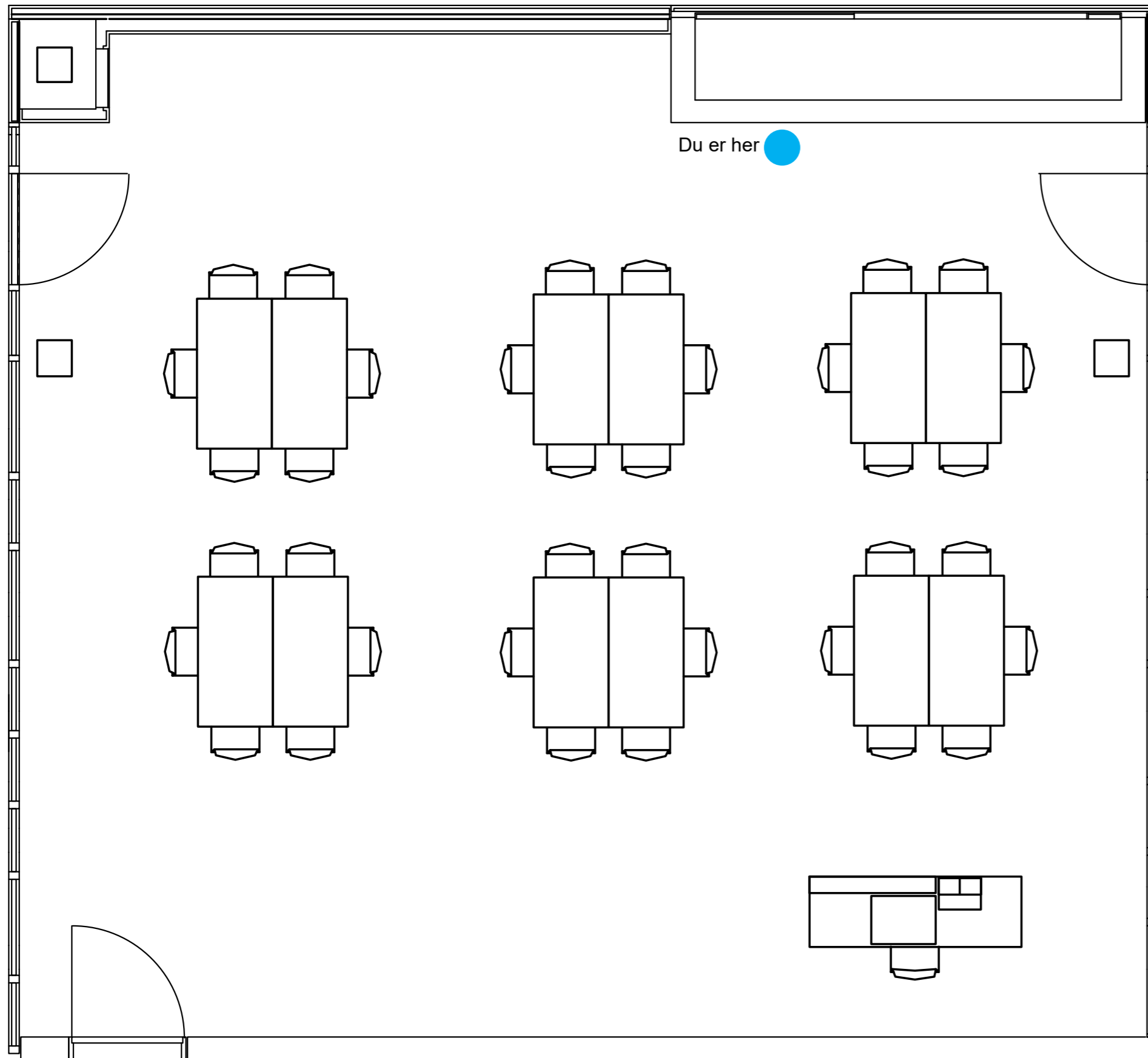
## Inventaropstilling:

- 20 borde (4-Learning 640x1280)
- 61 stole (4-Cast Four)



# Inventaropstillingsplan - Normal drift

Richard Petersens Plads, Bygning 324, Lokale 050, 2800 Kgs. Lyngby



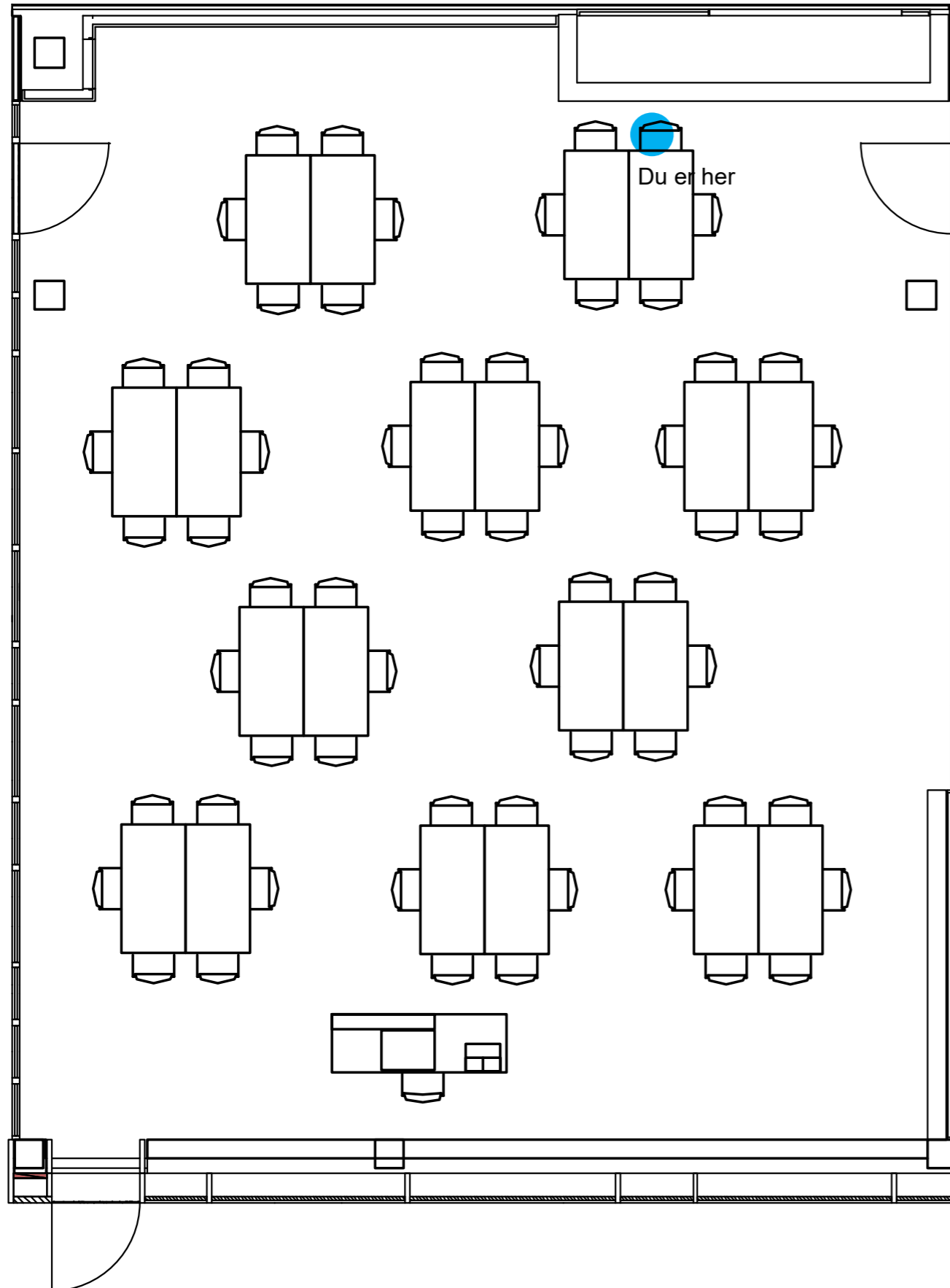
## Inventaropstilling:

- 12 borde (4-Learning 640x1280)
- 37 stole (4-Cast Four)



# Inventaropstillingsplan - Normal drift

Richard Petersens Plads, Bygning 324, Lokale 060, 2800 Kgs. Lyngby



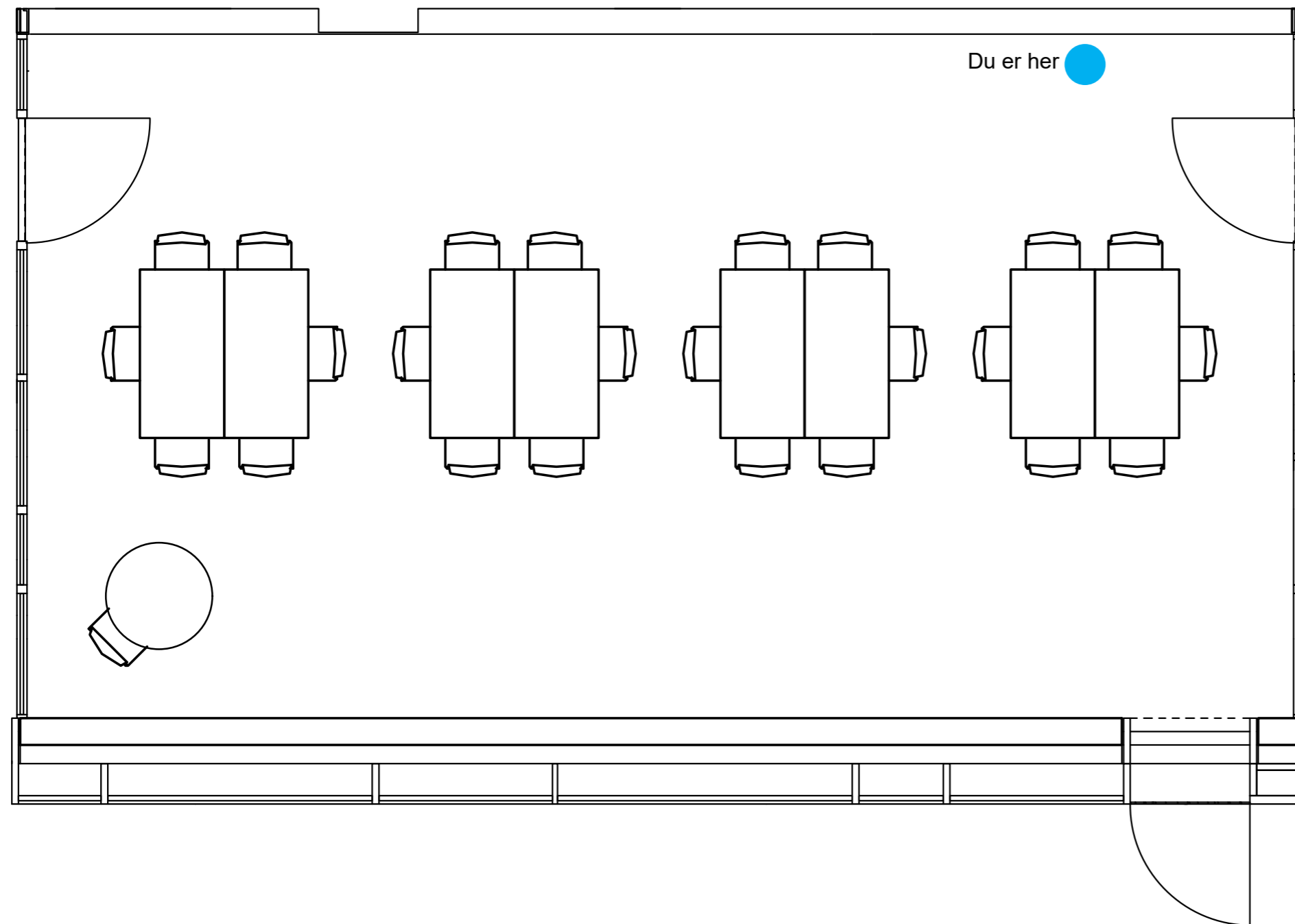
## Inventaropstilling:

- 20 borde (4-Learning 640x1280)
- 61 stole (4-Cast Four)



# Inventaropstillingsplan - Normal drift

Richard Petersens Plads, Bygning 324, Lokale 070, 2800 Kgs. Lyngby



## Inventaropstilling:

- 8 borde (4-Learning 640x1280)
- 25 stole (4-Cast Four)

